

CPD50L1

4-wheel Li-ion Counterbalance forklift 5000kg



- High ground clearance and big tires perfect for handling and traction in every environment
- Overhead guard height (h6) = 2250mm and dedicated mast for loading in containers
- Shorter l2 and smaller turning radius providing maneuverability in confined spaces
- Improved travel speed maximizing transport efficiency
- Great ergonomic design with spacious legroom, adjustable steering wheel and comfortable bucket seat
- 80V Li-Ion battery grant efficiency, long autonomy and opportunity charging
- Joystick option available for fatigue-free operation
- Multi battery chargers fulfilling different needs



| Manufacturer | | | EP |
|----------------------------------|-------|----|---------------|
| Model designation | | | CPD50L1 |
| Drive | | | Electric |
| Load capacity | Q | kg | 5000 |
| Load center distance | c | mm | 500 |
| Service weight | | | 7000 |
| Height, mast lowered | h1 | mm | 2230 |
| Lift height | h3 | mm | 3000 |
| Height, mast extended | h4 | mm | 4175 |
| Length to face of forks | l2 | mm | 2900 |
| Overall width | b1/b2 | mm | 1550 |
| Fork dimensions | s/e/l | mm | 55x150x1070 |
| Turning radius | Wa | mm | 2675 |
| Travel speed, laden/unladen | | | 16/18 km/h |
| Lifting speed, laden/unladen | | | 0.3/0.46 m/s |
| Lowering speed, laden/unladen | | | 0.45/0.51 m/s |
| Max. gradeability, laden/unladen | | | 15/20 % |
| Drive motor rating S2 60 min | | | 18 kW |
| Battery voltage/nominal capacity | | | V/Ah 80/560 |

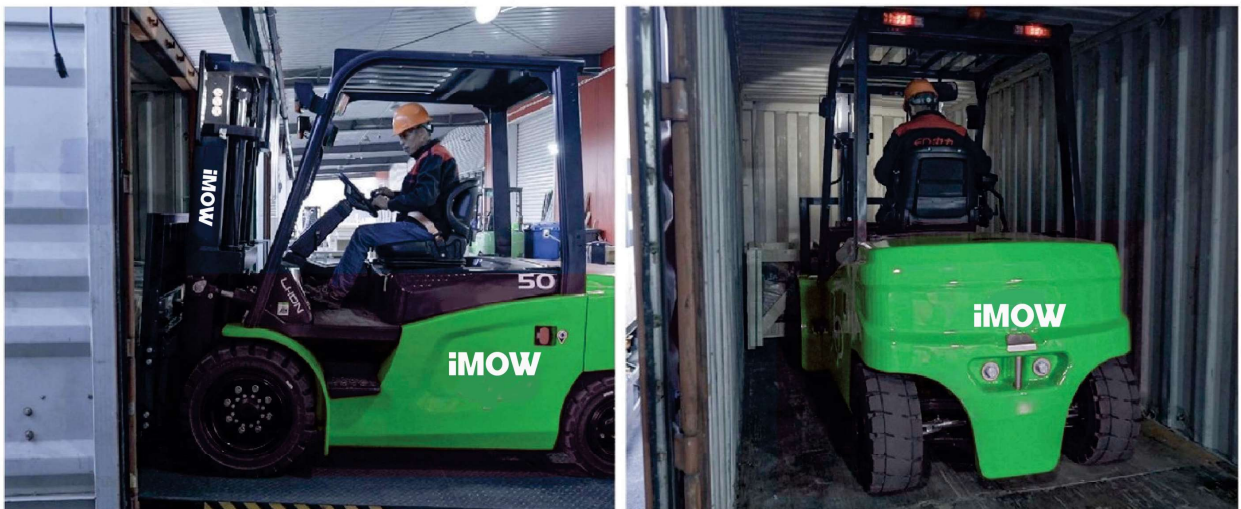


FEATURE

New appearance combining both practical and aesthetics design

The new design of the CPD50L1 reflects both practicality and beauty. The internal lay-out has been optimized, resulting in shorter l2 of 2900mm and a tighter turning radius of 2675mm. The compact size makes it easy to maneuver in confined spaces.

The bolted overhead guard offers maximum flexibility for retrofit or replacement and the height of 2250mm combined with triplex 4,5 meters elevation allows for goods transportation in standard containers.



Different lithium battery capacity options to meet different needs

The CPD50L1 offers two lithium battery options, 80V/560Ah and 80V/690Ah, to meet regular and intensive applications. It is designed around the advantages of lithium technology - opportunity charging, zero maintenance, zero carbon emissions and zero gas emissions during charging, which contributes to convenient and sustainable operation. The practical IP65 external plug provide charging convenience without the need to open the cover.



■ Fast travel speed for maximum efficiency

Compared to the classic CPD50F8, the travel speed of the CPD50L1 is improved to 16/18km/h, speeding up warehouse turnover and increase transport efficiency.



■ Joystick option for fatigue-free operation

The CPD50L1 can be fitted with hydraulic joystick controls instead of mechanical levers. Positioned at the end of the armrest, fingertip operation is possible, improving the operator ergonomics with the following controls: all fork hydraulic control including the 4th way, driving direction (F-N-B), horn, emergency stop button.



■ Market-proven components and optimized lay-out

The CPD50L1 inherits mature components, such as drive unit, motors, controllers and mast, ensuring great reliability. The box girder structure is more rigid granting higher stability and the new hydraulic pump makes the lifting operation more precise and quiet.



■ Ergonomic seat for a comfortable experience

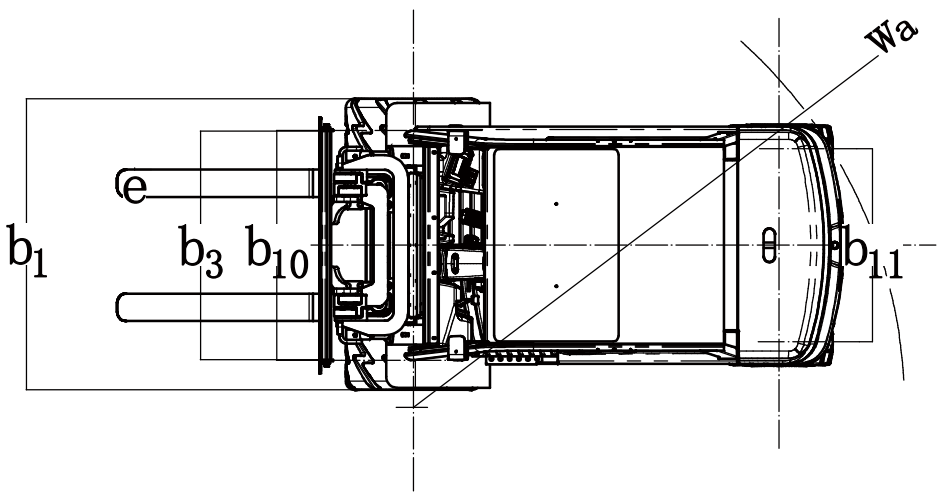
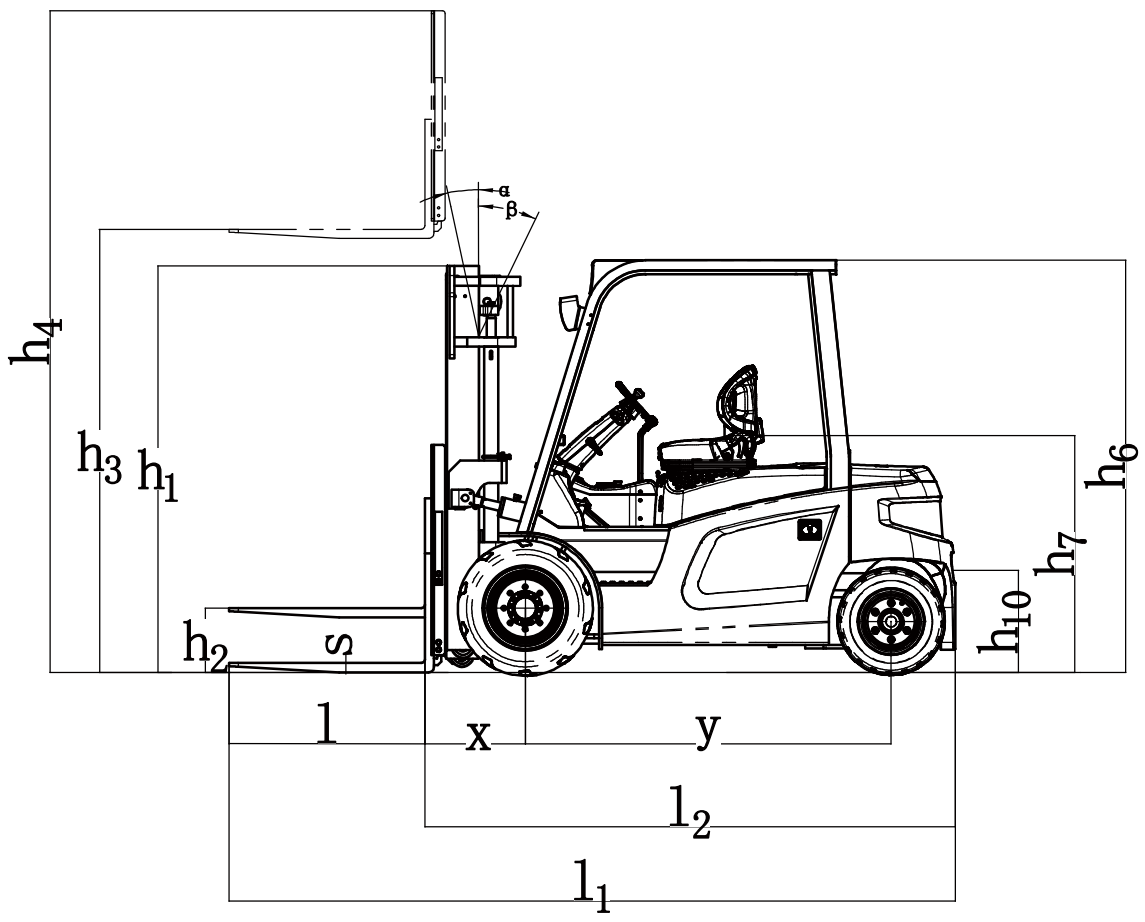
The seat height (h7) is 1208mm from the ground, lower in its category. This makes it easy for the driver to get in and out.



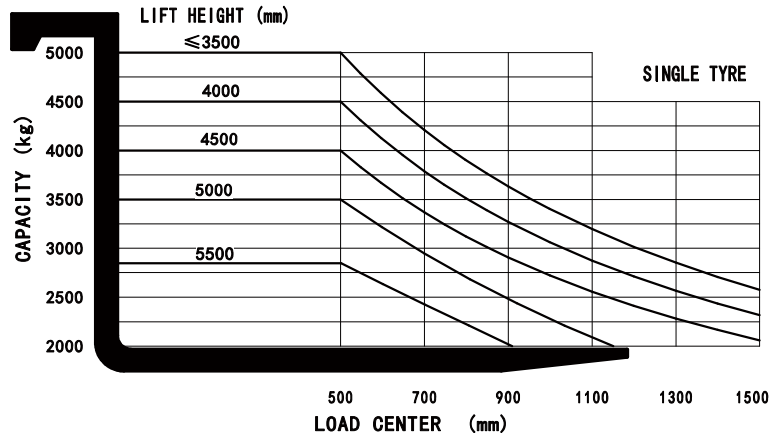
4-wheel Li-ion Counterbalance forklift 5000kg CPD50L1

| | | | | | |
|---------------------|----------------|---------------------------------------------|--------------------------------|------------|----------------------|
| Distinguishing mark | 1.1 | Manufacturer | | | EP |
| | 1.2 | Model designation | | | CPD50L1 |
| | 1.3 | Drive | | | Electric |
| | 1.4 | Operator type | | | Seated |
| | 1.5 | Load capacity | Q | kg | 5000 |
| | 1.6 | Load center distance | c | mm | 500 |
| | 1.8 | Load distance, centre of drive axle to fork | x | mm | 548 |
| | 1.9 | Wheelbase | y | mm | 2000 |
| | Service weight | 2.1 | Service weight | | kg |
| 2.2 | | Axle loading, laden front/rear | | kg | 10840/1160 |
| 2.3 | | Axle loading, unladen front/rear | | kg | 3220/3780 |
| Tyres/chassis | 3.1 | Tyre type | | | Solidrubber |
| | 3.2 | Tyre size, front | | | 28x12.5-15 |
| | 3.3 | Tyre size, rear | | | 23X10-12 |
| | 3.5 | Wheels, number front/rear (x=drive wheels) | | mm | 2x/2 |
| | 3.6 | Tread width, front | b ₁₀ | mm | 1262 |
| | 3.7 | Tread width, rear | b ₁₁ | mm | 1085 |
| Dimensions | 4.1 | Tilt of mast/fork carriage forward/backward | α/β | ° | 6/ 10 |
| | 4.2 | Retracted mast height | h ₁ | mm | 2230 |
| | 4.3 | Free lift | h ₂ | mm | 150 |
| | 4.4 | Lift height | h ₃ | mm | 3000 |
| | 4.5 | Height, mast extended | h ₄ | mm | 4175 |
| | 4.7 | Height of overhead guard (cabin) | h ₆ | mm | 2250 |
| | 4.8 | Seat height/standing height | h ₇ | mm | 1208 |
| | 4.12 | Tow coupling height | h ₁₀ | mm | 555 |
| | 4.19 | Overall length | l ₁ | mm | 3970 |
| | 4.20 | Length to face of forks | l ₂ | mm | 2900 |
| | 4.21 | Overall width | b ₁ /b ₂ | mm | 1550 |
| | 4.22 | Fork dimensions | s×e×l | mm | 55X150X1070 |
| | 4.23 | A,B Fork carriage class/type A, B | | | 3A |
| | 4.24 | Fork carriage width | b ₃ | mm | 1250 |
| | 4.31 | Ground clearance, laden, below mast | m ₁ | mm | 130 |
| | 4.32 | Ground clearance, center of wheelbase | m ₂ | mm | 150 |
| | 4.34.1 | Aisle width for pallets 1000×1200 crossways | Ast | mm | 4440 |
| | 4.34.2 | Aisle width for pallets 800×1200 lengthways | Ast | mm | 4640 |
| | 4.35 | Turning radius | Wa | mm | 2675 |
| Performance data | 5.1 | Travel speed, laden/unladen | | km/h | 16/18 |
| | 5.2 | Lifting speed, laden/unladen | | m/s | 0.3/0.46 |
| | 5.3 | Lowering speed, laden/unladen | | m/s | 0.45/ 0.51 |
| | 5.6 | Max. drawbar pull, laden/unladen | | N | 26000 |
| | 5.8 | Max. gradeability, laden/unladen | | % | 15/20 |
| | 5.10 | Service brake | | | Hydraulic/Mechanical |
| 5.11 | Parking brake | | | Mechanical | |
| Electric-engine | 6.1 | Drive motor rating S2 60 min | | kW | 18 |
| | 6.2 | Lift motor rating at S3 15% | | kW | 25.4 |
| | 6.4 | Battery voltage/nominal capacity | | V/Ah | 80/560 |
| | 6.5 | Battery weight | | kg | 396 |
| | Addition data | 8.1 | Type of drive control | | |
| 10.5 | | Steering design | | | — |
| 10.7 | | Sound pressure level at the driver's ear | | dB(A) | 70 |

If there are improvements of technical parameters or configurations, no further notice will be given.
The diagram shown may contain non-standard configurations.



CAPACITY CHART



Mast Option

| | Mast type | Lift height (h3) | Height, Mast | | | Height, Free lift(h2) | | Load distance centre of drive axle to fork X | Tilt of mast/fork carriage forward/backward | | Load capacity |
|-----------------|-----------|------------------|----------------------------|--------------|---------------|-----------------------|---------------|----------------------------------------------|---------------------------------------------|----|---------------|
| | | | Height, mast lowered(h1) | Height, Mast | | No backrest | With backrest | | α | β | |
| | | | | No backrest | With backrest | | | | | | |
| | | | 500mm Load center distance | Single tyre | 5.0t | | | | | | |
| 2-standard mast | 2W300 | 3000 | 2233 | 4175 | 3770 | 145 | 145 | 565 | 6 | 10 | 5000 |
| | 2W330 | 3300 | 2383 | 4475 | 4070 | 145 | 145 | 565 | 6 | 10 | 5000 |
| | 2W350 | 3500 | 2483 | 4675 | 4270 | 145 | 145 | 565 | 6 | 10 | 5000 |
| | 2W370 | 3700 | 2583 | 4875 | 4470 | 145 | 145 | 565 | 6 | 10 | 4800 |
| | 2W400 | 4000 | 2783 | 5175 | 4770 | 145 | 145 | 565 | 6 | 6 | 4750 |
| | 2W425 | 4250 | 2908 | 5425 | 5020 | 145 | 145 | 565 | 6 | 6 | 4250 |
| 2-free mast | 2W450 | 4500 | 3033 | 5675 | 5270 | 145 | 145 | 565 | 6 | 6 | 4000 |
| | 2F271 | 2710 | 2200 | 3885 | 3480 | 1055 | 1355 | 565 | 6 | 10 | 5000 |
| | 2F300 | 3000 | 2345 | 4175 | 3770 | 1200 | 1500 | 565 | 6 | 10 | 5000 |
| | 2F330 | 3300 | 2495 | 4475 | 4070 | 1350 | 1650 | 565 | 6 | 10 | 5000 |
| | 2F350 | 3500 | 2595 | 4675 | 4270 | 1450 | 1750 | 565 | 6 | 10 | 5000 |
| 3-free mast | 3F400 | 4000 | 2080 | 4780 | 5200 | 1230 | 900 | 578 | 6 | 6 | 4500 |
| | 3F435 | 4350 | 2195 | 5130 | 5550 | 1345 | 1015 | 578 | 6 | 6 | 4250 |
| | 3F450 | 4500 | 2245 | 5280 | 5700 | 1395 | 1065 | 578 | 6 | 6 | 4000 |
| | 3F470 | 4700 | 2310 | 5480 | 5900 | 1460 | 1130 | 578 | 6 | 6 | 3750 |
| | 3F500 | 5000 | 2460 | 5780 | 6200 | 1610 | 1280 | 578 | 6 | 6 | 3500 |
| | 3F550 | 5500 | 2680 | 6280 | 6700 | 1830 | 1500 | 578 | 3 | 6 | 2850 |
| | 3F600 | 6000 | 2845 | 6780 | 7200 | 1995 | 1665 | 578 | 3 | 6 | 2200 |

Option

| No. | Optional items | CPD50L1 |
|------|----------------------|----------------------------------------------------------------------------------------|
| 1.1 | Fork dimension | ○150*55*1070○150*55*1220○150*55*1370○150*55*1520○150*55*1670○150*55*1820 |
| 1.4 | Fork carriage width | ●1250mm○Yes and can be customized |
| 1.5 | Fork carriage height | ●1200mm○Yes and can be customized |
| 2.5 | Front wheel material | ●Solid○Non-marking solid |
| 2.6 | Rear wheel material | ●Solid○Non-marking solid |
| 2.7 | Battery capacity | ●80V560AH○80V690AH |
| 2.8 | Charger | ○80V150A●80V200A |
| 2.9 | Battery indicator | ●With time |
| 2.10 | Seat type | ●Premium○Premium + seatbelt logic switch○Suspension○Suspension + seatbelt logic switch |
| 2.11 | Attachments | ●No○Built-in sideshifter○External shifter○Fork positioner |
| 2.13 | Traction pin | ●Yes |
| 3.5 | Front lamp | ●LED |
| 3.6 | Rear lamp | ●No○LED |
| 3.7 | Warning lamp | ●Yes |
| 3.8 | Steering lamp | ●Yes |
| 3.9 | Blue lamp | ●No○2 front○1 rear○2 front + 1 rear |
| 3.10 | Area warning lamp | ●No○Red, 1 left + 1 right |
| 3.11 | Rearview mirror | ●1 rearview mirror○Add 1 on both sides |
| 3.12 | Buzzer | ●Yes |
| 3.17 | OPS system | ●Yes |
| 3.23 | Telematics | ○No●Yes and not customized |
| 4.3 | Cabin | ●No○Basic semi-cabin○Upgrade semi cabin○Full cabin |
| 4.5 | Joystick | ●No○Yes and not customized |
| 4.9 | Heater | ●No○Yes and not customized |

Note: ● standard ○ option — NA