

# ZOOMLION TELESCOPIC BOOM LIFT ZT32J-V

Comply with CE/ANSI/CSA Standard



## HIGHLIGHTS

- ▶ Largest diesel-powered telescopic boom lift with non-extension axle, work height of 34.3m
- ▶ Hexagonal boom design with good stiffness
- ▶ Diesel-powered hydraulic system and load sensitive system, energy saving by 13%
- ▶ Adapt to extreme cold weather of -23°C and hostile working condition of an elevation of 4,100m

## FEATURES

### Standard Features

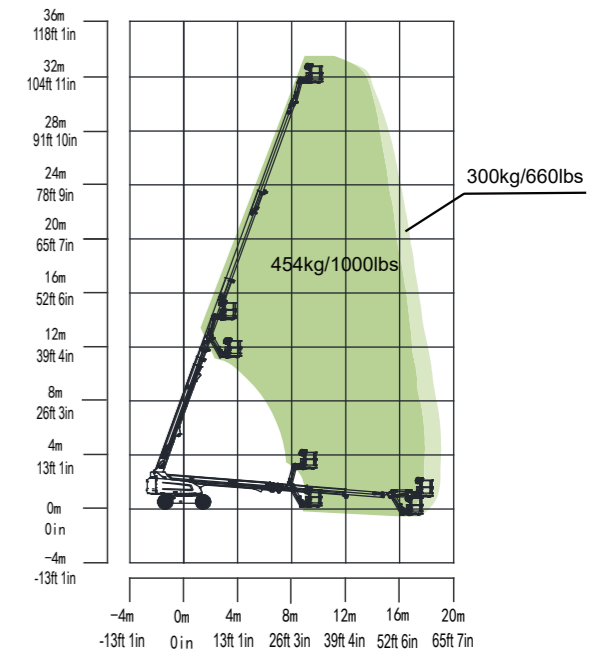
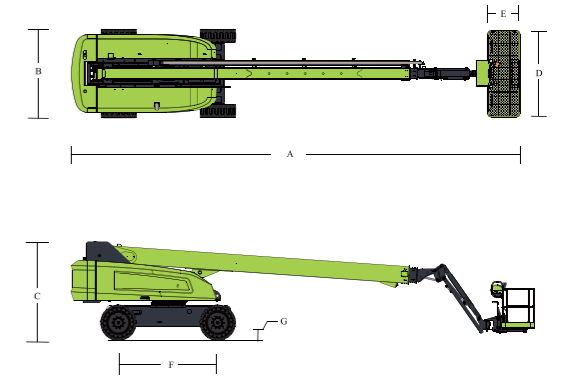
Horn
Proportional control
All motion alarm
Flashing beacon
Self-closing entry gate
Emergency descent system
Emergency stop button
Auto-leveling system
On-board diagnostic system
Tilt protection system
Oscillating axle
Load sensing system
Swing-out engine tray

### Accessories & Options

- ▶ Platform work light
- ▶ Anti-collision device
- ▶ AC power to platform

## ZOOMLION

Model	ZT32J-V	
	Imperial	Metric
<b>Size</b>		
Work Height	112ft 6in	34.3m
Platform Height	105ft 11in	32.3m
Horizontal Outreach	62ft 11in	19.2m
A - Stowed Length	42ft 11in	12.9m
B - Stowed Width	8ft 2in	2.49m
C - Stowed Height	9ft	2.75m
D - Platform Length	8ft	2.44m
E - Platform Width	3ft	0.91m
F - Wheelbase	9ft 2in	2.8m
Tread	8ft 2in	2.49m
G - Ground Clearance	1ft 4in	0.41m
<b>Performance</b>		
Platform Capacity (Unrestricted/Restricted)	660/1000lb	300/454kg
Drive Speed (Stowed)	3.42mph	5.5km/h
Gradeability	45% (24°)	
Turning Radius (Inside)	11ft 6in	3.5m
Turning Radius (Outside)	20ft	6.1m
Turntable Swing	360° continuous	
Platform Rotation	±90°	
Tail Swing	5ft	1.52m
Jib (Range of Articulation)	130° (-55°~75°)	
Max. Wind Speed	28mph	12.5m/s
<b>Power</b>		
Engine	Kubota V2607(Euro StageV) Kubota V3307(China Stage III) Weichai WP2.3NG75(China Stage IV)	
Fuel Tank Capacity	39.6 (us gal)	150L
Control Voltage	12V DC	
Hydraulic Tank Capacity	39.6 (us gal)	150L
Drive Mode	4WD	
Steering Mode	Front-wheel	
<b>Tire</b>		
Type	Solid tire Foam-filled tire	
<b>Weight</b>		
Gross	39816lb	18060kg



Range of Motion ZT32J-V