

ZOOMLION

EXTENDED-RANGE HYBRID TELESCOPIC BOOM LIFT

ZT42JEH-V

Comply with CE Standard

HIGHLIGHTS

- ▶ 18.2kw large power range extender provides power in low electric quantity for long working hours
- ▶ Light weight for low operating cost
- ▶ High frequency and low amplitude response control technology, click to move with buffer
- ▶ X-outrigger for large lifespan, stable on slope
- ▶ Dual jib rotary actuators for large work range, folded design for short transportation length and less transportation cost
- ▶ Micro-motion technology of container transport for safe and stable container shipping
- ▶ Load-sensitive and engine condition matching energy-saving technology, as well as the boom self-weight lowering function, energy consumption reduced by 18% compared to conventional technology
- ▶ Controller remote upgrade and mobile parameter adjustment for high service efficiency



FEATURES

Standard Features

Telecommunications System	Self-closing entry gate	Tilt protection system
Horn	Emergency descent system	Load sensing system
Proportional control	Emergency stop button	4.3' Led display
All motion alarm	Auto-leveling system	Remote monitoring and rental management platform
Flashing beacon	On-board diagnostic system	

Accessories & Options

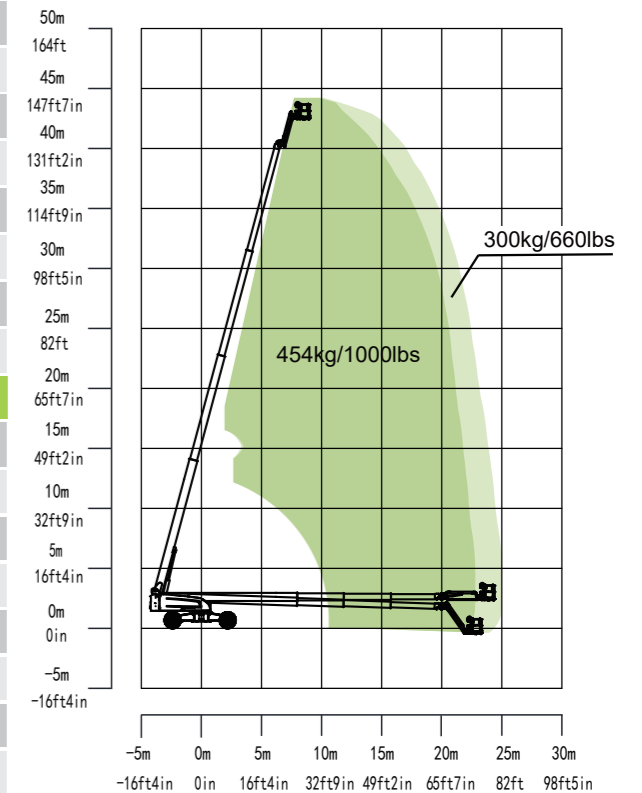
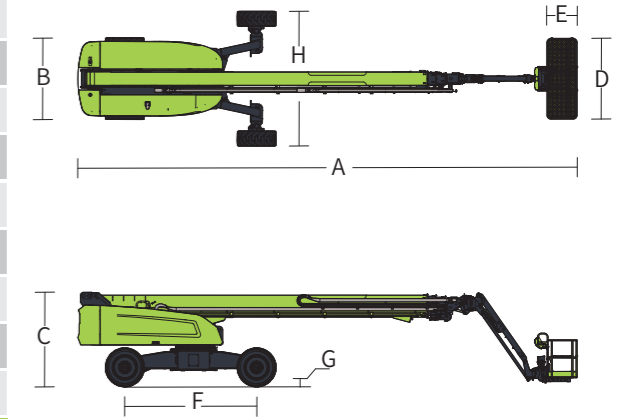
- ▶ Platform work light
- ▶ Anti-collision device
- ▶ AC power to platform

ZOOMLION



THUBAS TUNGGAL PERKASA
Make it Better | Your Solutions | Customer is Our Goal

Model	ZT42JEH-V
Size	
Work Height	44m
Platform Height	42m
Horizontal Outreach	25m
A Overall Length (Stowed)	16.22m
B Overall Width (Stowed)	2.46m
C Overall Height (Stowed)	2.86m
D Platform Length	2.44m
E Platform Width	0.91m
F Wheelbase	3.81/4.15m
Track width	2.46m/4.07m
G Ground Clearance	0.4m
Performance	
Platform Capacity	300/454kg
Drive Speed (stowed)	5km/h
Gradeability	45%(24°)
Turning Radius (Inside)	2.5m
Turning Radius (Outside)	5.65m
Turntable Rotation	360° continuous
Platform Rotation	±90°
Tail Swing	1.67m
Jib Rotation	130° (-55°~75°)
Max. Wind Speed	12.5m/s
Power	
Battery	80V/460Ah
Range Extender	18.2kW
Charger	80V/80A
Drive Motor	5.2kW
Lift Motor	30kW
Auxiliary power	12V DC
Fuel Tank	105L
Hydraulic Tank Capacity	245L
Tire	
Tire Type	Foam-filled tire
Weight	
Gross	22120kg



Range of Motion ZT42JEH-V