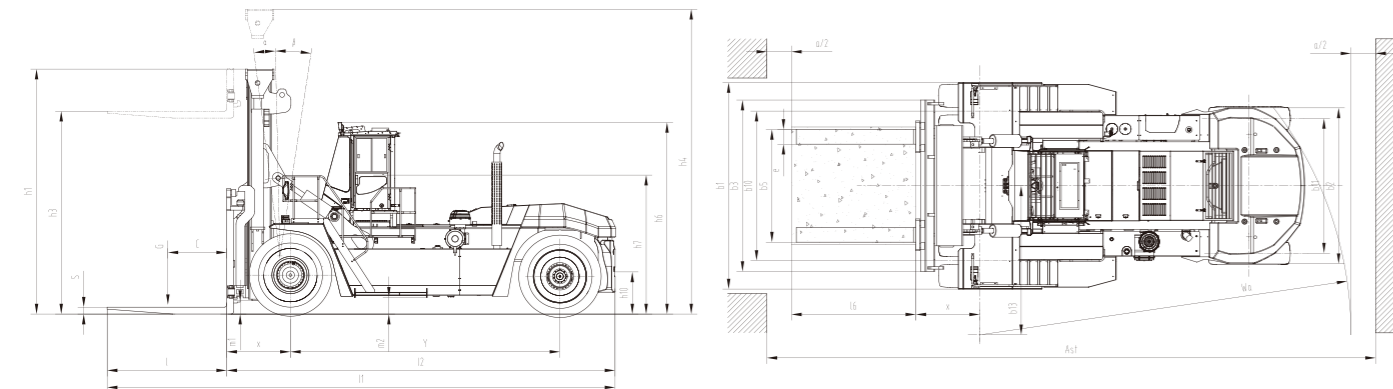
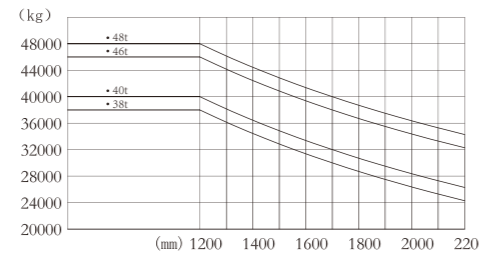


# Heavy IC Forklift Truck

		HANGCHA GROUP CO.,LTD.			
		CPCD380-W61	CPCD400-W61	CPCD460-W61	CPCD480-W61
Distinguishing mark	1.1	Manufacturer			
	1.2	Manufacturer's type designation			
Weight	1.3	Drive: electric (battery or mains), diesel, petrol, fuel gas			
	1.4	Operator type: hand, pedestrian, standing, seated, order-picker			
Tyres, chassis	1.5	Rated capacity/rated load			
	1.6	Load centre distance			
	1.8	Load distance, centre of drive axle to fork			
	1.9	Wheelbase			
	2.1	Service Weight			
Dimensions	3.1	Tyres: solid rubber, superelastic, pneumatic, polyurethane			
	3.2	Tyre size, front			
	3.3	Tyre size, rear			
	3.5	Wheels, number front / rear (x = driven wheels)			
	3.6	Tread, front			
	3.7	Tread, rear			
	4.1	Tilt of mast/fork carriage forward/backward			
	4.2	Height, mast lowered			
	4.3	Free lift			
	4.4	Lift			
Performance Data	4.5	Height, mast extended			
	4.7	Height of overhead cabin			
	4.8	Seat height relating to SIP			
	4.12	Coupling height			
	4.19	Overall length			
	4.20	Length to face of forks			
	4.21	Overall width			
	4.22	Fork dimensions			
	4.24	Fork-carriage width			
	4.25	Distance between fork-arms			
Combustion-engine	4.31	Ground clearance, laden, below mast			
	4.32	Ground clearance, centre of wheelbase			
	4.34	Aisle width with load length 2400mm			
	4.35	Turning radius			
	4.36	Minimum pivoting point distance			
	5.1	Travel speed, laden/unladen			
	5.2	Lift speed, laden/unladen			
	5.3	Lowering speed, laden/unladen			
	5.5	Drawbar pull, laden/unladen			
	5.7	Gradeability, laden/unladen			
Addition data	5.10	Service brake			
	7.1	Engine manufacturer/type			
	7.2	Engine power			
	7.3	Rated speed			
	7.4	Number of cylinders/displacement			
	7.9	Vehicle electrical system voltage			
	7.10	Battery voltage/nominal capacity			
		Rated torque			
		Transmissions Manufacturer			
		Transmissions Type			
	Stage FWD/RVS				
10.1	Operating pressure for attachments				
10.2	Oil volume for attachments				
10.3	Hydraulic Tank - capacity (drain & refill)				
10.4	Fuel tank capacity				
10.7	Sound pressure level at the driver's seat				



# 38-48t mast:(Pneumatic)

Type	Model	Max. fork height	Overall height		Tilt range	Capacity			
			Lowered	Extended		Load capacity at 1200mm Double tire			
		mm	mm	mm	F/R	38t	40t	46t	48t
Wide view mast G400MX	G400M360	3600	4400	6170	6/10	38000	40000	/	/
	G400M400	4000	4600	6570	6/10	38000	40000	/	/
	G400M430	4300	4750	6870	6/10	38000	40000	/	/
	G400M450	4500	4850	7070	6/10	38000	40000	/	/
	G400M480	4800	5000	7370	6/10	38000	40000	/	/
	G400M500	5000	5100	7570	6/10	38000	40000	/	/
	G400M550	5500	5350	8070	3/6	37000	39000	/	/
	G400M600	6000	5600	8570	3/6	36000	38000	/	/
	G400M650	6500	5850	9070	3/6	34500	36500	/	/
	G400M700	7000	6100	9570	3/6	33000	35000	/	/
Wide view mast G480MX	G480M360	3600	4800	6570	6/10	/	/	46000	48000
	G480M400	4000	5000	6970	6/10	/	/	46000	48000
	G480M430	4300	5150	7270	6/10	/	/	46000	48000
	G480M450	4500	5250	7470	6/10	/	/	46000	48000
	G480M480	4800	5400	7770	6/10	/	/	46000	48000
	G480M500	5000	5500	7970	6/10	/	/	46000	48000
	G480M550	5500	5750	8470	3/6	/	/	45000	47000
	G480M600	6000	6000	8970	3/6	/	/	44000	46000
	G480M650	6500	6250	9470	3/6	/	/	42500	44500
	G480M700	7000	6500	9970	3/6	/	/	41000	43000



# Heavy IC Forklift Truck

with capacities of 38,000 to 48,000kg

Gang Wates Kp. Rawa Banteng No.83 Rt 003/01 Ds Mekarwangi  
Kec. Cikarang Barat, Kabupaten Bekasi, Jawa Barat

**T : 0877-8445-0249 E : thubastunggalperkasa@gmail.com W : thubastunggalperkasa.co.id**

The World of Hangcha



# Heavy IC Forklift Truck

Environment/  
Efficiency/  
Economy



## Features

- / DANA TE30 new type gear box, CUMMINS QSM11 3A emission engine and KESSLER D102 heavy-load driving axle are utilized. The key parts are internationally well-known brand products of which the quality is stable and durable.
- / Equipped with seat operating presence sensing (OPS) system to improve safety; The controller area network (CAN) bus LCD display is applicable, which has the function of built-in weight display, fault diagnosis and chinese-english display query system.
- / The independent dynamic braking oil circuit system can reduce the complexity of hydraulic system and oil cost.
- / With the load sensing variable main hydraulic system, the non-working energy consumption is very small.
- / Equipped with electronic automatic shift 5F/3R gearbox, make the power strong, start fast and smooth;
- / With the electric control hydraulic motor drive fan main cooling system, can achieve fast and efficient interval temperature work and reduce fan power consumption.
- / Integral cab, transparent visual field, good sealing.
- / With integrated and multi-functional operating handle and electro-hydraulic proportional control, easy to lift, tilt and operate. With LUDV main control multiple-way valve, it can realize fast response, precise operation and achieve fine repeatability.
- / For engine revolution handle, following control is applicable to reduce the operator's load. Centralized fault warning is concise and clear, reducing driver tension.
- / With the centralized pressure test point, convenient opening of the body cover, hood and manual tilting of the cab for easy maintenance.
- / Equipped with FIMS cloud intelligent forklift truck management system, remote intelligent monitoring, better promote equipment management and logistics management.

## Standard Specification

- / Duplex wide view mast
- / Fork hydraulic distance adjustment
- / Standard fork
- / Cab
- / Air conditioner
- / Full hydraulic power steering
- / Four way multi-way valve
- / OPS system
- / Steering wheel adjustable device
- / High level exhaust system
- / Traction device
- / Battery main switch
- / Reverse Sensor
- / LCD bus instrument
- / Median instructions
- / Parking brake indication
- / Charging indicator
- / Preheat indicator
- / Engine oil pressure alarm
- / Empty filter alarm
- / Accumulator low voltage alarm
- / Alarm of hydraulic oil and oil filter
- / Oil-water separator alarm
- / Engine fault alarm
- / LED lights
- / Water thermomete
- / Fuel meter
- / Oil temperature meter
- / Time meter
- / Pneumatic tyre
- / Back-Up Buzzer
- / Fanfare horn
- / Manual tilting pump
- / Handrail multi-directional adjustable device
- / Tools

## Options

- / Customized color
- / Forks of other specifications
- / Mast of other specifications
- / Solid tyre
- / Truck interphone
- / Voice Back-Up Buzzer
- / Electronic alarm lamp (with \ without control switch)
- / Rear view system (with storage)
- / Front and rear view system (with storage)
- / Spark arrester
- / Fire extinguisher (2kg\4kg)
- / Automatic fire extinguisher
- / Mast LED working light
- / Four-way traffic recording system
- / Speed limits
- / Blue light
- / Weighing system
- / Air prefilter
- / Conducting electrostatic chain
- / Fan
- / Electric tilting pump

